

# BECCA®

## S300A Automatic Spray Gun Cleaning Process

**Clean Gun As Soon As Possible.**

*Tan pronto como sea posible en la pistola limpia.*

### Step 1.

**Empty Paint** in waste container

*Pintura vacío en el contenedor de residuos.*



### Step 2.

**Pre-Rinse** in waste container

*Pre-Rinse en el contenedor de residuos*



### Step 3.

**POWERCLEAN™**

Quick-connect compressed air.

*Conexión rápida de aire comprimido*



### Step 4.

**Remove Air Cap**

*Eliminar Air Cap*



### Step 5.

**Flow Brush**

- Clean air cap *Limpiar Air Cap*
- Clean fluid tip *Limpiar el líquido del Consejo*

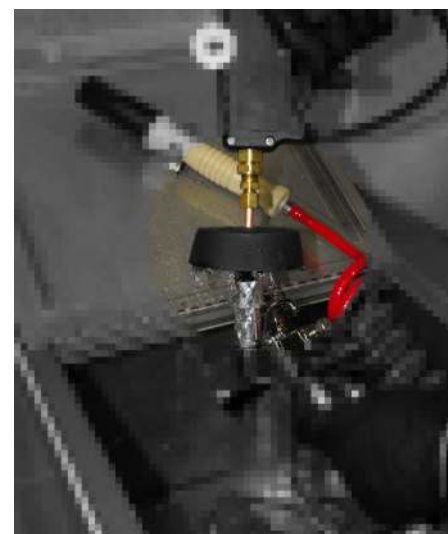


### Step 6.

**POWERPISTOL™**

Trigger gun at same time

*Cañón de desencadenador al mismo tiempo*

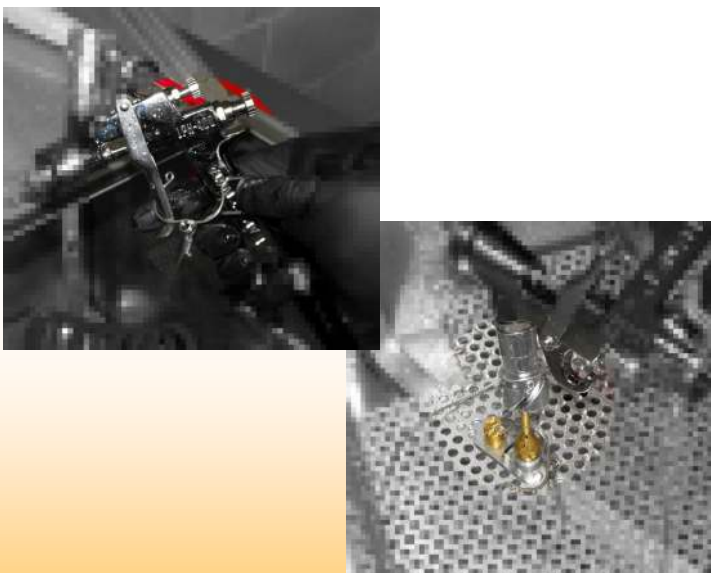


### Step 7.

**Connect Trigger Clip**

*Conectar clip gatillo*

Place on Wash Basin Fluid Nozzle  
*Colocar en la boquilla de líquido de cuenca de lavado*



### Step 8.

**Turn "ON"**

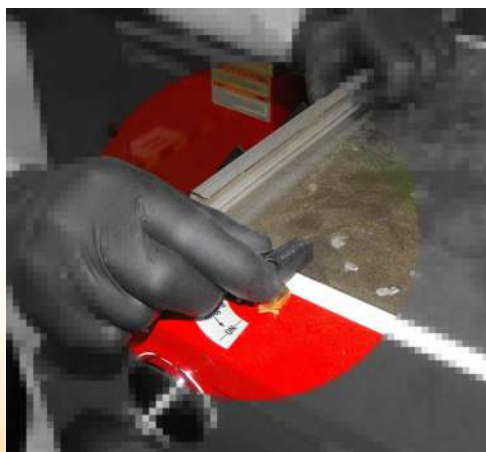
*Encienda la máquina*

**Run 2-3 Minutes**

*Ejecutar 2-3 minutos*

**Turn "OFF"**

*Apague la máquina*



### Step 9.

**POWERCLEAN™**

Disconnect compressed air.

*Desconectar de aire comprimido*



©Copyright March 2011



# BECCA®

2010 Cobb International Blvd, Suite H Kennesaw, GA 30152  
Phone 800.655.5649 Fax 800.655.5684 Internet: [www.beccainc.com](http://www.beccainc.com)