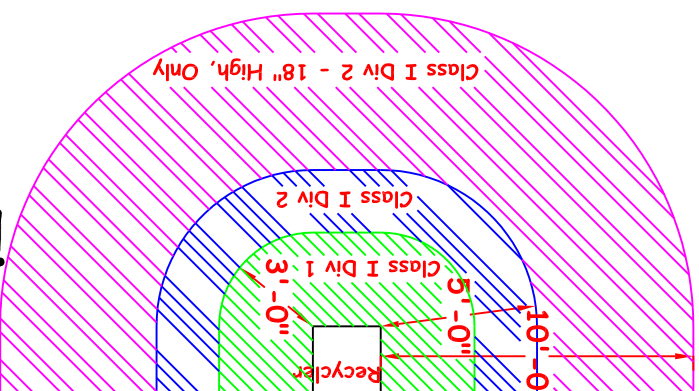
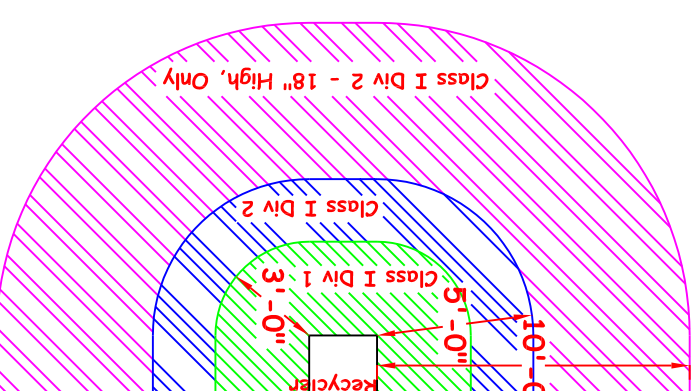


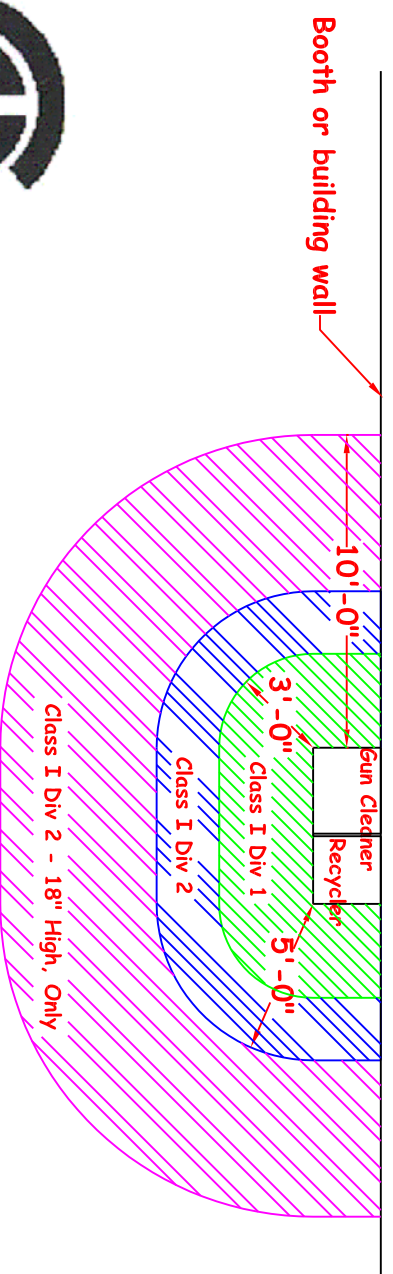
Intermediate Mix Room



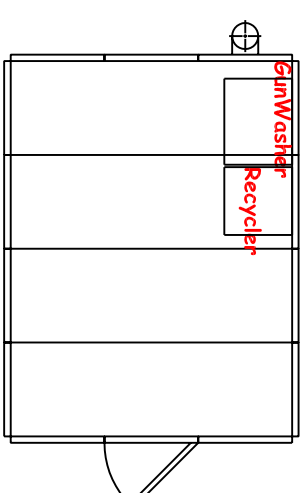
Three-Sided Mix Room



Free Standing Mix Room



Entire System Outside Mix Room



Entire System Inside Mix Room

Classification Zones are per:

- A) NFPA 33 Standard for Spray Application Using Flammable and Combustible Materials, Section 4.3.5
 - B) International Fire Code, Chapter 34 Flammable and Combustible Liquids 3403.1.1
- Zone requirements apply to both Gun Cleaners and Recyclers together and stand alone**



© BECCA 2003

IMPORTANT NOTE - This print is the confidential property of BECCA. It is not to be used or reproduced in any manner, not submitted to other parties for examination without the prior written consent of BECCA.

NAME OF PROJECT:		REV:	DATE:	REVISION DESCRIPTION:	BY / NO:
GENERAL ARRANGEMENT		1	11/15/01	NEW	
		2	1/8/03	Code & Exhaust Clarification	
DRAWN BY:		CHECKED BY:	DATE:	SCALE:	
C Bythewood			11/15/01		



DESCRIPTION OF DRAWING:	
Equipment Locations	
DRAWING NO:	BECCA-6A
SHEET NO:	1/2
REV:	

All Dimensions are approximate and subject to change. Customer must check equipment size, location in building and all clearances to building and contents.

DATA AND SPECS

Electrical Requirements

Amp Draw listed is for entire unit - including motor and heating element

Model	Full Load Amp Draw 220 Volt/ 60 Hz/ 1 Phase	Location	
		Non-Classified Area	In Mix Room/Classified Area
3-Gallon	4.5 Amps	- General Purpose Disconnect - Minimum 5 ft. away from unit	Explosion Proof Disconnect Required
6-Gallon	10 Amps	- Minimum 18 in. off the floor	

NOTE: 600V Control Cable C-L-X type MC-HL for Hazardous Locations. Some jurisdictions may require hard conduit all the way to the unit

Air Requirements

Item	Air Line Specification	Notes
Gun Cleaner	3/8" @ 110 PSI	Secondary regulator inside unit Factory set at 85-90 PSI

Oil

Model	Capacity	Description
3-Gallon	2 Gallons Oil	BECCA Thermic Heat Transfer Oil Part # 630066 (1 Gallon Container)
6-Gallon	3 Gallons Oil	

Recycler Bags

Model	Description
3-Gallon	BECCA Thermal Recycling Bags Part # 630003
6-Gallon	BECCA Thermal Recycling Bags Part # 660006

Filters

Item	Models	Description
Gun Washer	NEXT 70 NEXT 80	20" x 25" Fiberglass Filter

© BECCA 2003

IMPORTANT NOTE - This print is the confidential property of BECCA. It is not to be used or reproduced in any manner, not submitted to other parties for examination without the prior written consent of BECCA.

CODE INFORMATION

BECCA offers a complete line of spray gun cleaners and solvent recyclers that conform to the requirements of:

- * NFPA-33 Standard for Spray Application Using Flammable and Combustible Materials
- * NFPA-30 Flammable and Combustible Liquids Code
- * IFC International Fire Code

The Recycler has been Certified and Listed:

- * UL 2208 Standard for Solvent Distillation Units

The Recycler has been reviewed and approved by:

- * CSA for U.S. & Canada Requirements Report # 1150926



Conformance to all these requirements is dependent upon the manner in which the equipment is installed. The contractor will make certain that all of the electrical wiring and conduit, piping, gas supply, roof penetrations, automatic fire protection systems, and the location of the equipment within the building also conforms to the cited codes and other references.

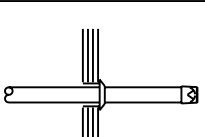
EXHAUST INFORMATION

Model	Description	Preferred Exhaust Option	Notes
NEXT 30 NEXT 30 H	4" Dia Exhaust	Separate Exhaust Stack (see below)	Exhaust must run straight out and vertical of the Gun Cleaner
NEXT 70 NEXT 70 H NEXT 80 NEXT 80 H	6" Dia Exhaust	Attach to Mix Room Exhaust or Separate Exhaust Stack (see below)	for approx. 3-4 feet before making any offsets

EXHAUST OPTIONS

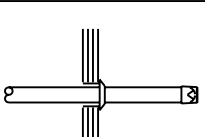
Attached to Mix Room Exhaust

Mix Room Duct
- The preferred method is to make connection to the suction side of the blower.
- If connection is required to be on the push side of the blower, use a gravity damper. Connection should be made at an angle = or > 45 degrees.



Separate Exhaust Stack

- This will require an additional Roof Penetration.



EXHAUST FLEX CONNECTOR - NEXT 70/80 WORKSTATIONS

Use flex duct connector for first 2-3 feet
This will allow future service access to control panel



All Dimensions are approximate and subject to change. Customer must check equipment size, location in building and all clearances to building and contents.

REV:	DATE:	REVISION DESCRIPTION:	BY / NO:
1	11/15/01	NEW	
1	1/8/03	Code & Exhaust Clarification	
2	9/10/03	Model Update & Exhaust Clarification	

NAME OF PROJECT:
GENERAL ARRANGEMENT
Code & Exhaust Clarification

DRAWN BY: CHECKED BY: DATE: SCALE:
C Bythewood 11/15/01



DESCRIPTION OF DRAWING:
Data and Specifications
DRAWING NO: SHEET NO: REV:
BECCA-GA 2/2